



# Virginia Healthcare Workforce Briefs

Indicators from the Bureau of Labor Statistics'  
 Current Employment Statistics Survey  
**Series 1: State & National Employment**

Series 1, Issue 87

June 2019

Inside this Brief:

Virginia HC&SA Employment	2
Virginia Employment	2
National Employment	3
State Employment Growth	3
About the Data	4

*Data in the report are seasonally adjusted. Self-employed persons, including health professionals in private practice, are not included.*

## Highlights

- ◆ According to preliminary estimates, Virginia's Health Care & Social Assistance (HC&SA) sector enjoyed its strongest month of employment growth so far this year thanks to the creation of 3,100 new jobs in May. This increase represents a one-month annualized employment growth rate of 8.6%. So far this year, Virginia's HC&SA sector has increased employment by 7,200.
- ◆ While Virginia's HC&SA sector experienced very strong employment growth in May, this did not lead to an increase in the state's total nonfarm payroll. In fact, Virginia's total nonfarm payroll fell by 3,200 during the month, which translates into a -0.9% annualized growth rate.
- ◆ Virginia's HC&SA sector was also responsible for 13% of all nationwide HC&SA employment growth in May. The national HC&SA sector created 24,000 new jobs during the month. This result represents its lowest monthly employment gain in more than one year.
- ◆ The nation's total nonfarm payroll also experienced slow growth in May. After increasing by 224,000 in April, the nation's total nonfarm payroll grew by only 75,000 in May. This gain represents a one-month annualized growth rate of 0.6%. This result also represents its weakest monthly gain since February.

## Data in Brief

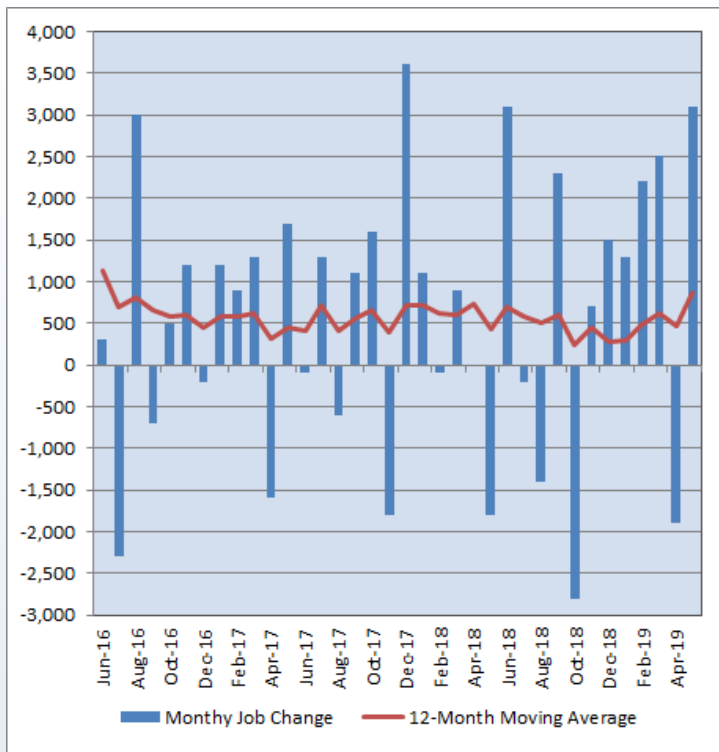
Seasonally Adjusted*	Employment, in Thousands				Growth Rate, Annualized		
	May 2018	Feb. 2019	Apr. 2019	May 2019	12 Month	3 Month	1 Month
<b>Nonfarm, Total</b>							
Virginia	4,000.2	4,025.6	4,035.4	4,032.2	0.8%	0.7%	-0.9%
National	148,745.0	150,643.0	151,020.0	151,095.0	1.6%	1.2%	0.6%
<b>Health Care &amp; Social Assistance</b>							
Virginia	442.7	449.4	450.0	453.1	2.3%	3.3%	8.6%
National	19,873.6	20,243.6	20,366.8	20,390.8	2.6%	2.9%	1.4%
<b>All Other Nonfarm</b>							
Virginia	3,557.5	3,576.2	3,585.4	3,579.1	0.6%	0.3%	-2.1%
National	128,871.4	130,399.4	130,653.2	130,704.2	1.4%	0.9%	0.5%

Preliminary estimates are italicized

\*Seasonally adjusted data are adjusted by the Bureau of Labor Statistics to account for weather, holidays and other seasonal changes. Economists use seasonally adjusted data to reveal underlying trends over time. This series uses seasonally adjusted data exclusively. When comparing data in this series to other HWDC series, or publications from other sources, it is important to note whether the data reported have been seasonally adjusted.

## Virginia HC&SA Employment

**Figure 1: Monthly Change in Employment in Virginia’s Health Care & Social Assistance Sector, Seasonally Adjusted.**



According to preliminary data released on Friday, June 21, 2019, by the U.S. Department of Labor, Bureau of Labor Statistics, Virginia’s Health Care & Social Assistance (HC&SA) sector enjoyed very strong employment growth in May. This sector created 3,100 new jobs in May, a gain that translates into a one-month annualized employment growth rate of 8.6%. This result represents the largest monthly employment gain in Virginia’s HC&SA sector so far in 2019. In addition, this also represents the first time in almost one year in which Virginia’s HC&SA sector has increased employment by more than 3,000 in a single month.

During the first five months of 2019, Virginia’s HC&SA sector has been a significant contributor to statewide employment growth. So far this year, HC&SA employment in the state has increased by 7,200. Thanks to this strong year-to-date growth, the 12-month moving average of the employment change in Virginia’s HC&SA sector has nearly tripled since January. At its current level, Virginia’s HC&SA sector has created an average of 867 jobs per month over the past year.

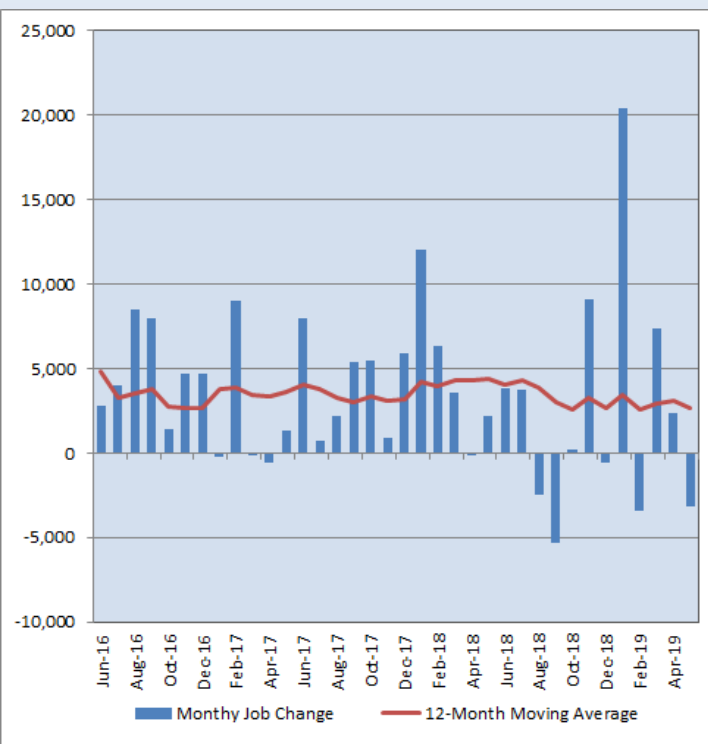
## Virginia Employment

Despite enjoying very strong employment growth in its HC&SA sector in May, Virginia experienced a decline in its total nonfarm payroll during the month. In May, the state’s total nonfarm payroll fell by 3,200. This decline represents a one-month annualized growth rate of -0.9%. In addition, this result represents the second time in the past four months in which Virginia’s total nonfarm payroll has experienced a decline. In February, total nonfarm payroll in the state fell by 3,400.

Regardless, Virginia’s total nonfarm payroll is still enjoying positive year-to-date growth so far in 2019. Over the past five months, Virginia’s total nonfarm payroll has grown by 23,600. This is in line with the increase of 24,000 in the state’s total nonfarm payroll at the same point in 2018. Regardless, growth in Virginia’s total nonfarm payroll has moderated considerably ever since its dramatic increase of 20,400 in January.

Over the past year, Virginia’s total nonfarm payroll has increased by an average of 2,667 per month. Virginia’s HC&SA sector has been responsible for one-third of this growth.

**Figure 2: Monthly Change in Employment in Virginia’s Total Nonfarm Payroll, Seasonally Adjusted.**

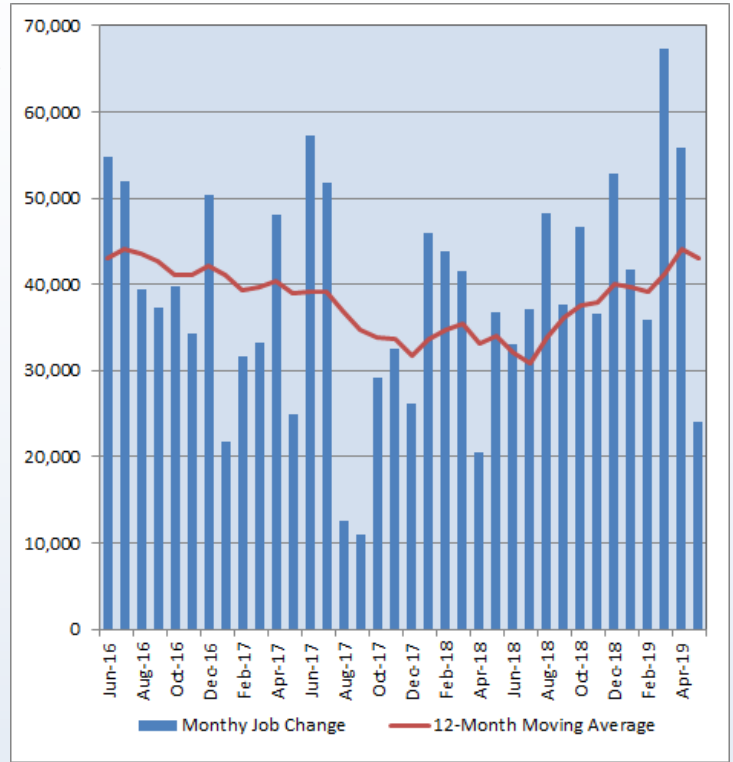


### National Employment

The strong employment growth in Virginia’s HC&SA sector did not lead to similar job growth in the national HC&SA sector in May. The national HC&SA sector only created 24,000 new jobs across the country in May, a gain that represents a one-month annualized employment growth rate of 1.4%. This is far below the comparable 8.6% annualized growth rate for Virginia’s HC&SA sector. In addition, this result represents the weakest monthly employment gain in the national HC&SA sector since last April. In fact, Virginia’s HC&SA sector was responsible for 13% of all nationwide HC&SA employment growth in May and 3% of all growth so far in 2019. Regardless, long-term national HC&SA employment growth remains strong thanks to its 2.6% 12-month employment growth rate.

The weak job growth in the national HC&SA sector in May extended to the nation’s total nonfarm payroll as well, which grew by only 75,000 during the month. This month’s gain represents the second time since February in which the nation’s total nonfarm payroll has increased by less than 100,000. However, the nation’s total nonfarm payroll has still increased by 820,000 so far this year.

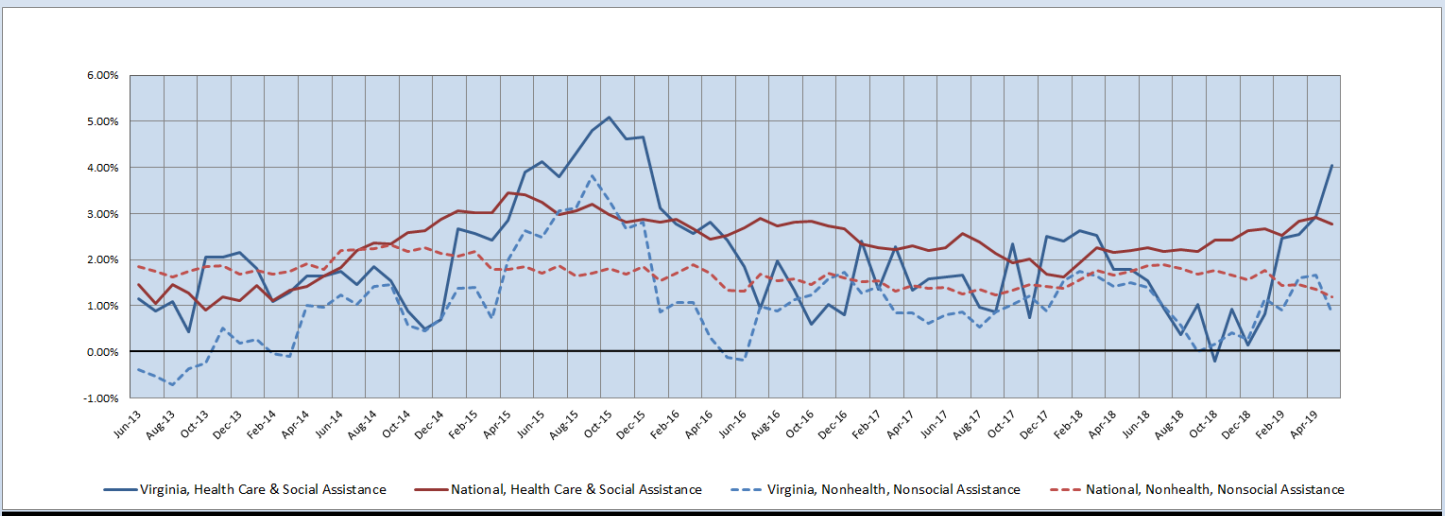
**Figure 3: Monthly Change in Employment in National Health Care & Social Assistance Sector, Seasonally Adjusted**



### State Employment Growth

The six-month moving average of the employment growth rate in Virginia’s HC&SA sector increased for the fifth consecutive month. In May, this moving average increased from 2.94% to 4.05%, thereby reaching its highest value in more than three years. On the other hand, the six-month moving average of the growth rate in Virginia’s total nonfarm payroll was cut nearly in half in May from 1.67% to 0.85%. This represents the lowest level for the six-month moving average of the growth rate of Virginia’s total nonfarm payroll so far this year. Meanwhile, the six-month moving average of the employment growth rate in the national HC&SA sector fell from 2.91% to 2.78%, while the comparable moving average for the nation’s total nonfarm payroll experienced a similar decline from 1.36% to 1.19%.

**Figure 4: Six-Month Moving Average, Employment Growth, Seasonally Adjusted**



**Healthcare Workforce  
Data Center**

Perimeter Center  
9960 Mayland Drive, Suite 300  
Henrico, VA 23233-1463

Phone: (804) 367-2115  
Fax: (804) 527-4434  
E-mail: [hwdc@dhp.virginia.gov](mailto:hwdc@dhp.virginia.gov)

[www.dhp.virginia.gov/hwdc/](http://www.dhp.virginia.gov/hwdc/)

*HWDC Staff:*

Elizabeth Carter, PhD <i>Executive Director</i>	Yetty Shobo, PhD <i>Deputy Director</i>
Laura Jackson, MSHSA <i>Operations Manager</i>	Rajana Siva, MBA <i>Research Analyst</i>
Christopher Coyle <i>Research Assistant</i>	

The Department of Health Professions Healthcare Workforce Data Center works to improve the data collection and measurement of Virginia's healthcare workforce through regular assessment of workforce supply and demand issues among the 80 professions and 350,000 practitioners licensed in Virginia by DHP.

The HWDC collects data on Virginia's licensed health professionals through surveys completed during the online license renewal and application process. Survey results and data may be accessed on our website: [www.dhp.virginia.gov/hwdc/](http://www.dhp.virginia.gov/hwdc/).

The HWDC also provides a series of Virginia Healthcare Workforce Briefs based on data collected by the US Department of Labor's Bureau of Labor Statistics and the US Department of Commerce' Bureau of Economic Analysis.

Virginia Healthcare Workforce Briefs:

Series 1: State & National Employment (Monthly)

Series 2: Virginia Regional Employment (Monthly)

Series 3: Income & Compensation (Quarterly)

Follow us on. . .

Tumblr: <http://vahwdc.tumblr.com/>

---

**About the Data**

Data in this report are from the US Department of Labor, Bureau of Labor Statistics' Current Employment Statistics program. The CES program surveys about 143,000 businesses and government agencies monthly. Unless otherwise noted, this series uses seasonally-adjusted data that removes seasonal variations related to weather, holidays, weekends, seasons and other predictable variations. This allows us to better examine underlying trends in the labor market. Data from recent months are preliminary and subject to revision in future releases from the CES. Revisions will be reported in future editions of this series. Unless otherwise noted, the CES data presented in this series:

**Includes:**

- ◆ Data on employed individuals drawing a paycheck (payroll employees).
- ◆ All employees, regardless of role, occupation or hours worked.
- ◆ HC&SA employees in the private sector only.
- ◆ Persons employed by health professionals in private practice.
- ◆ Both government and private sector workers in nonfarm employment data.

**Does not include:**

- ◆ Self-employed workers or volunteers, including health professionals in private practice.
  - ◆ HC&SA employees in the public sector. (These are counted as government workers in monthly reports).
  - ◆ Information on hours worked or the quality of employment.
  - ◆ Government workers in HC&SA level data. (Government workers, regardless of occupation and role, are classified as public sector employees).
-